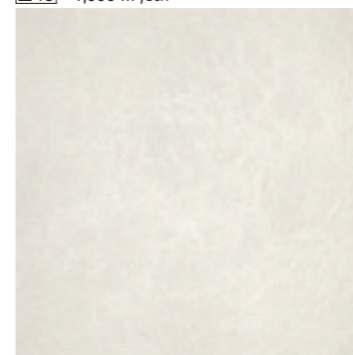


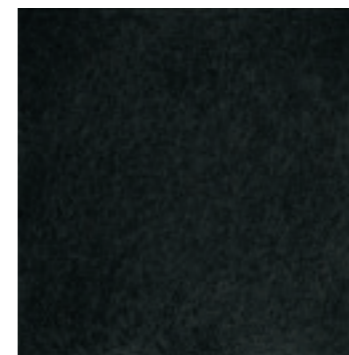


RIVESTIMENTI PELLE MEDIA 33,3x33,3

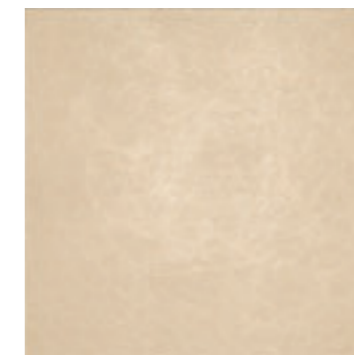
■ 18 | - 1,000 m²/box



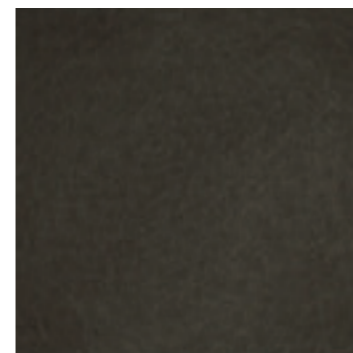
21050 BIANCO



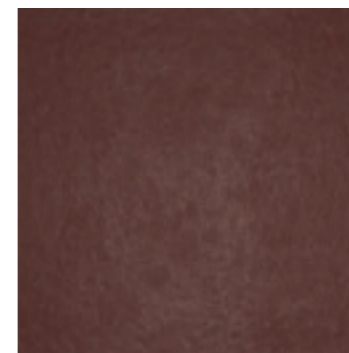
21051 NERO



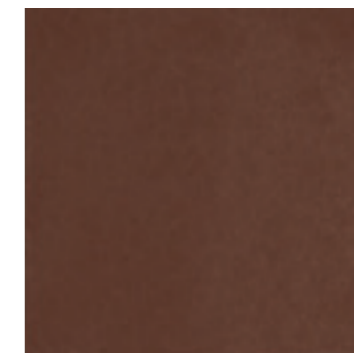
21052 BEIGE



21053 MOKA



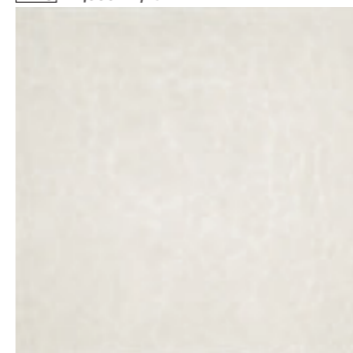
21054 BORDEAUX



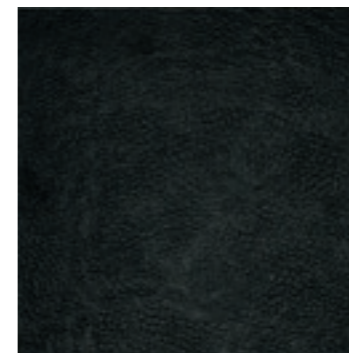
21055 CUOIO

RIVESTIMENTI PELLE GROSSA 33,3x33,3

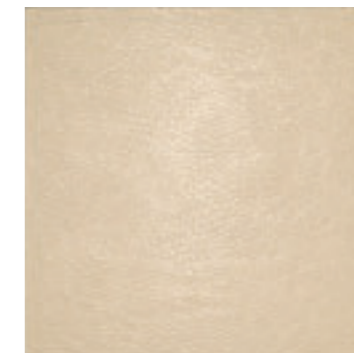
■ 18 | - 1,000 m²/box



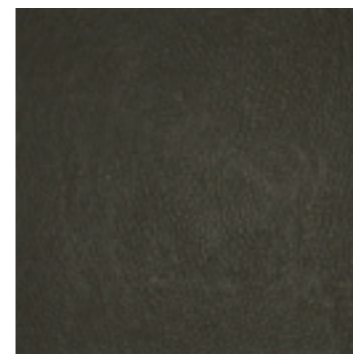
21060 BIANCO



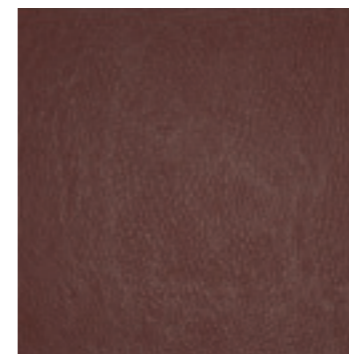
21061 NERO



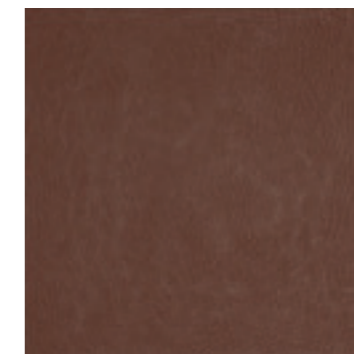
21062 BEIGE



21063 MOKA



21064 BORDEAUX



21065 CUOIO



21700 MODULO ORO
● 64 | - 4 pcs/box



RIVESTIMENTI
WALL TILES
FAÏENCE
WAND
REVESTIMIENTOS
ОБЛИЧКА
牆磚

33,3 x 33,3
(13"x13")



PAVIMENTI COORD.
COORDINATED FLOORINGS
CARRÉLUX DE SOL ASSORTIS
KOORDINIERTE BODENBELÄGE
PAVIMENTOS COORDINADOS
КООРДИНИРОВАННЫЕ ПОЛЫ
搭配地磚

33,3 x 33,3
(13"x13")



MOSAICI
MOSAICS
MOSAÏQUES
MOSAÏKE
MOSAICOS
МОЗАИКА
马赛克

33,3 x 33,3
(13"x13")

6

COLORI
COLOURS
COULEURS
FARBEN
COLORES
LIBRETA
顏色

3MM
≠

SPESSORE
THICKNESS
ÉPAISSEUR
STARKE
GRUESO
ТОЛЩИНА
厚度

MODULO RIGHE 33,3x33,3
●39 - 4 pcs/box



21860 BIANCO



21861 NERO



21862 BEIGE



21863 MOKA



21864 BORDEAUX



21865 CUOIO

MODULO GIGLIO 33,3x33,3
●39 - 4 pcs/box



21830 BIANCO



21831 NERO



21832 BEIGE



21833 MOKA



21834 BORDEAUX



21835 CUOIO

* Lotto minimo di vendita
* Minimum lot
* Lot de vente minimum
* Mindestlos
* Lote minimo de venta
* Минимальная партия для продажи
* 最小销售量

LISTELLO GIGLIO 8x33,3
●24 - 9 pcs/box



21840 BIANCO



21841 NERO



21842 BEIGE



21843 MOKA



21844 BORDEAUX



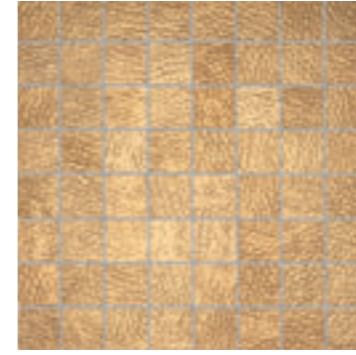
21845 CUOIO

MOSAICO 64 MODULI 33,3x33,3
●34 - 9 pcs/box



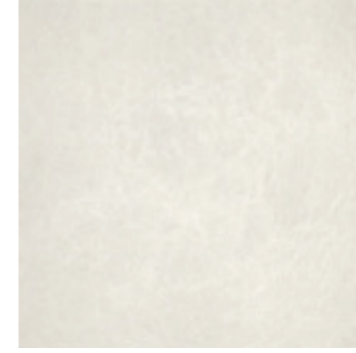
21870 BIANCO

- 21871 NERO
- 21872 BEIGE
- 21873 MOKA
- 21874 BORDEAUX
- 21875 CUOIO

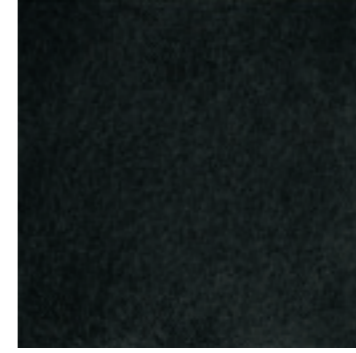


21876 ORO
●68 - 4 pcs/box

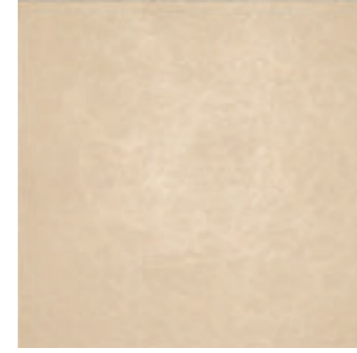
PAVIMENTI COORDINATI 33,3x33,3
1,000 m²/box



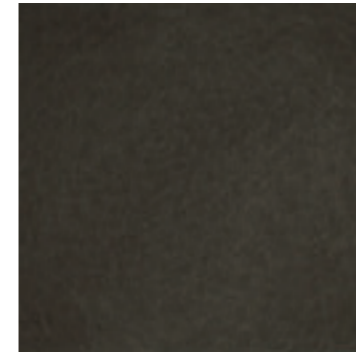
22170 BIANCO 3,5≠ REINFORCED ■36
22160 BIANCO 4,5≠ ■11



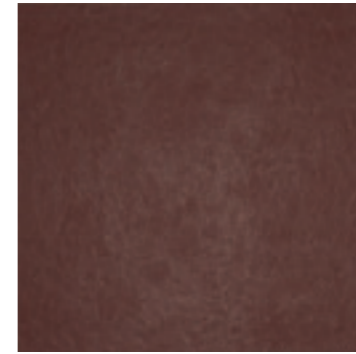
22171 NERO 3,5≠ REINFORCED ■36
22161 NERO 4,5≠ ■11



22172 BEIGE 3,5≠ REINFORCED ■36
22162 BEIGE 4,5≠ ■11



22173 MOKA 3,5≠ REINFORCED ■36
22163 MOKA 4,5≠ ■11



22174 BORDEAUX 3,5≠ REINFORCED ■36
22164 BORDEAUX 4,5≠ ■11



22175 CUOIO 3,5≠ REINFORCED ■36
22165 CUOIO 4,5≠ ■11

TORELLO 4x33,3	RACCORDO TORELLO 4x1	MATITTA 1,5x33,3	GOCCIA MATITTA 1,5x1	PROFILO METALLO	PROFILO METALLO	COPRISPIGOLO METALLO 0,3x33,3
●14 - 9 pcs/box	●14 - 4 pcs/box	●10 - 9 pcs/box	●14 - 4 pcs/box	●11 - 9 pcs/box	●17 - 9 pcs/box	9 pcs/box
21790 BIANCO 21791 NERO 21792 BEIGE 21793 MOKA 21794 BORDEAUX 21795 CUOIO	21800 BIANCO 21801 NERO 21802 BEIGE 21803 MOKA 21804 BORDEAUX 21805 CUOIO	21810 BIANCO 21811 NERO 21812 BEIGE 21813 MOKA 21814 BORDEAUX 21815 CUOIO	21820 BIANCO 21821 NERO 21822 BEIGE 21823 MOKA 21824 BORDEAUX 21825 CUOIO	21140 ACCIAIO 1x33,3 21142 ACCIAIO 0,5x33,3	21141 ORO 1x33,3 21143 ORO 0,5x33,3	21144 ACCIAIO ●14 21145 ORO ●19
●31 - 4 pcs/box 21796 ORO	●31 - 4 pcs/box 21806 ORO	●19 - 4 pcs/box 21816 ORO	●19 - 4 pcs/box 21826 ORO			



RIVESTIMENTI



PAVIMENTI 4,5≠

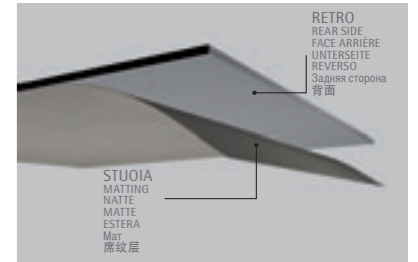


DECORI E MOSAICI



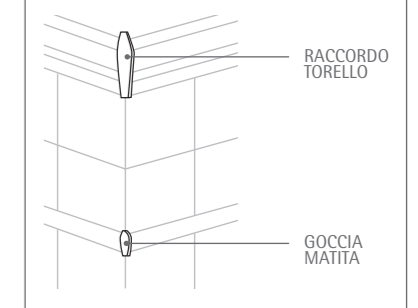
GRES PORCELLANATO SMALTATO

PAVIMENTI 3,5≠ REINFORCED



ASSEMBLAGGIO PEZZI SPECIALI

SPECIAL TRIMS ASSEMBLING • ASSEMBLAGE DE PIÈCES SPECIALES • ZUSAMMENBAU DER FORMTEILE • MONTAJE DE PIEZAS ESPECIALES • СБОРКА СПЕЦИАЛЬНЫХ ЭЛЕМЕНТОВ • 特殊件的組裝



IMBALLI E PESI • PACKINGS AND WEIGHTS • EMBALLAGES ET POIDS • VERPACKUNGEN UND GEWICHTE

EMBALAJES Y PESOS • УПАКОВКИ И ВЕС • 包裝和重量

EN 14411 Bib GL

FORMATO SIZE	pz/mq. pcs/sqm	pz/scat. pcs/box	mq/scat. sqm/box	kg/mq kg/sqm	kg/scat. kg/box	scat./pal box/pal	mq/pal sqm/pal	kg/pal
Rivestimento 33,3x33,3	9	9	1,000	6,75	6,75	108	108,00	729,00
Mosaico 33,3x33,3	-	9	1,000	-	6,57	-	-	-
Mosaico oro 33,3x33,3	-	4	0,443	-	2,92	-	-	-
Modulo/cornice 33,3x33,3	-	4	0,443	-	2,92	-	-	-
Listello 8x33,3	-	9	3,00 ml	-	1,80	-	-	-
Matita 1,5x33,3	-	9	3,00 ml	-	0,45	-	-	-
Goccia matita 1,5x1	-	4	-	-	0,04	-	-	-
Torello 4x33,3	-	9	3,00 ml	-	1,21	-	-	-
Raccordo torello 4x1	-	4	-	-	0,10	-	-	-
Coprispigolo metallo 0,3x33,3	-	9	3,00 ml	-	0,18	-	-	-
Profilo metallo 0,5x33,3	-	9	3,00 ml	-	0,18	-	-	-
Profilo metallo 1x33,3	-	9	3,00 ml	-	0,27	-	-	-
Pavimento 33,3x33,3 (sp3,5 mm)	9	9	1,000	7,20	7,20	96	96,00	691,20
Pavimento 33,3x33,3 (sp4,5 mm)	9	9	1,000	11,95	11,95	72	72,00	860,40